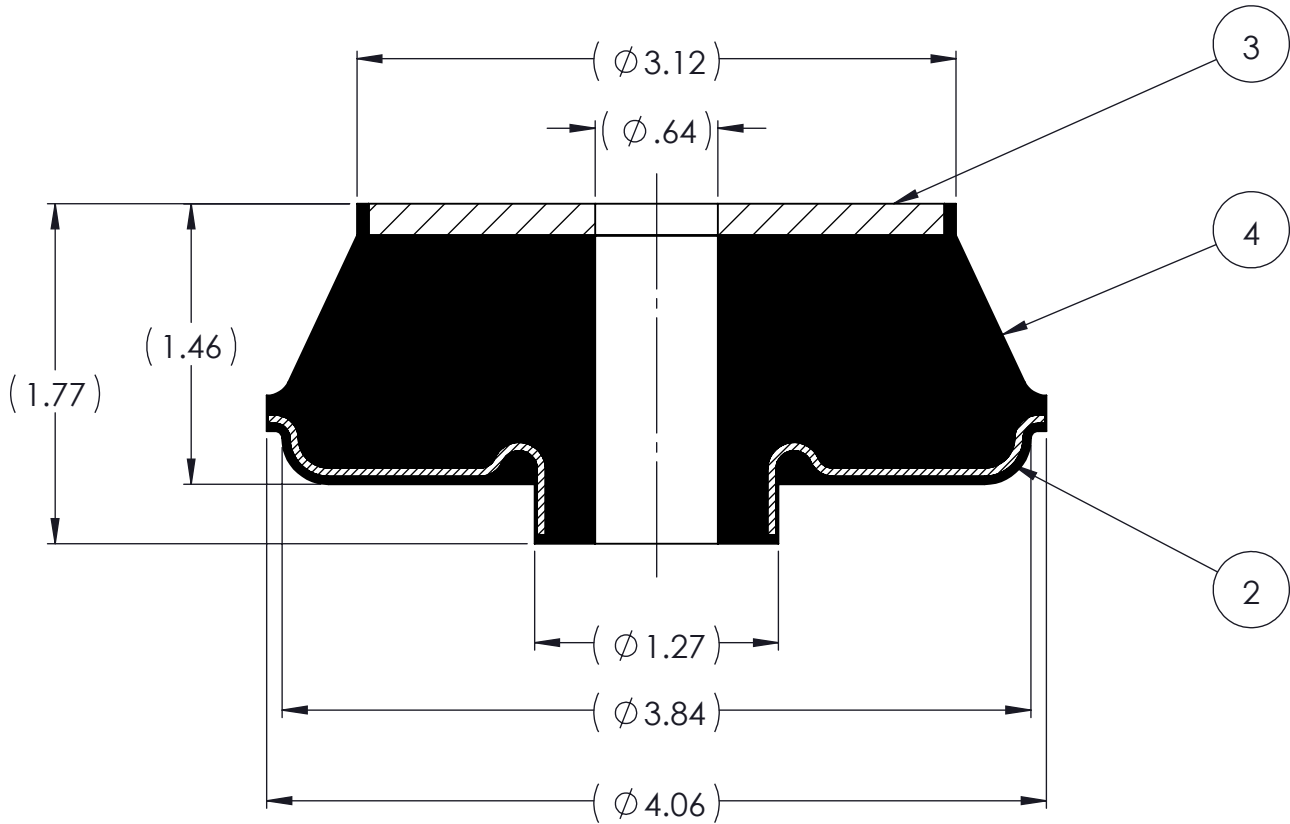
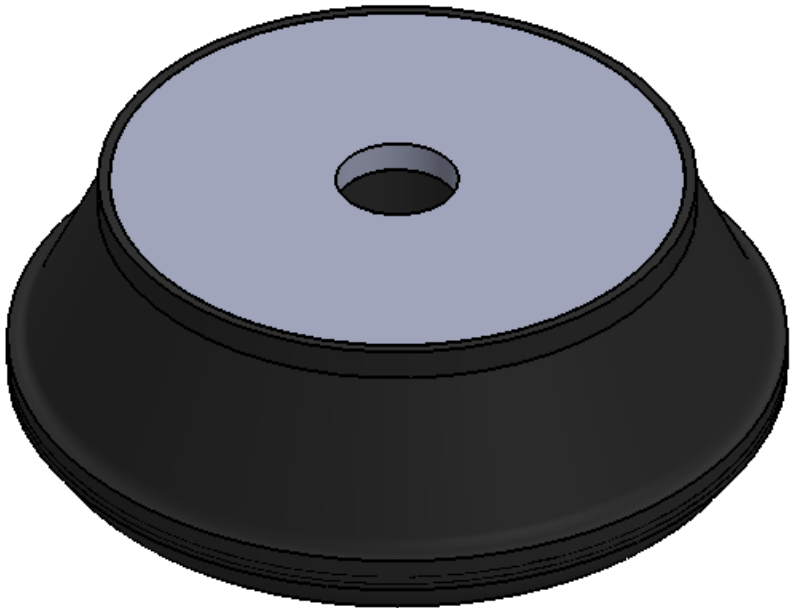


REVISIONS			
REV.	DESCRIPTION	DATE	APPROVED
1	INITIAL RELEASE OF DRAWING	10/16/2014	BS



NOTES:

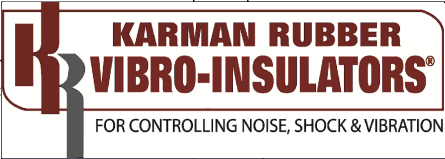
- 1 MATERIAL: ELASTOMER AND DUROMETER OF 40, 50, 60 OR 70 TO BE SPECIFIED.
- 2 ALL DIMENSIONS ARE REFERENCE.

PROPRIETARY AND
CONFIDENTIAL

THE INFORMATION
CONTAINED IN THIS
DRAWING IS THE SOLE
PROPERTY OF
KARMAN RUBBER. ANY
REPRODUCTION IN PART
OR AS A WHOLE
WITHOUT THE WRITTEN
PERMISSION OF
KARMAN RUBBER
IS PROHIBITED.

SIGNATURE		DATE
DRAWN	B. SENECA	10/16/2014
CHECK	S. BROWN	10/16/2014
ENGR	B. SENECA	10/16/2014
QA		
STRESS		
APPR		

UNLESS OTHERWISE SPECIFIED:
DIMENSIONS ARE IN INCHES
TOLERANCES:
.X =
.XX = ± 0.031
.XXX =
ANGLES = ± 1°
INTERPRET GEOMETRIC
TOLERANCING PER:
ASME Y14.5M-1994



	SIZE	CAGE CODE	DWG. NO.			REV
	B		K52			1
	DO NOT SCALE DRAWING		SCALE: 1:1	WEIGHT: 1 LB 2 OZ.	SHEET 1 OF 1	

AR	ELASTOMER	K52-4		4
1	MK520W	MK520W		3
1	MK520C	MK520C		2
	K52	K52		1
QTY.	DESCRIPTION	PART NUMBER	MATERIAL OR NOTES	ITEM

TITLE: **K52 SERIES
VIBRO-INSULATOR**
WWW.KARMAN.COM